

Suïtte a cinq acordes {  
6.me

Prélude  $\text{B}\flat$   $\frac{12}{8}$  *p.*

3 *f.* *p.* *f.*

6

9

12

15 *p.*

18

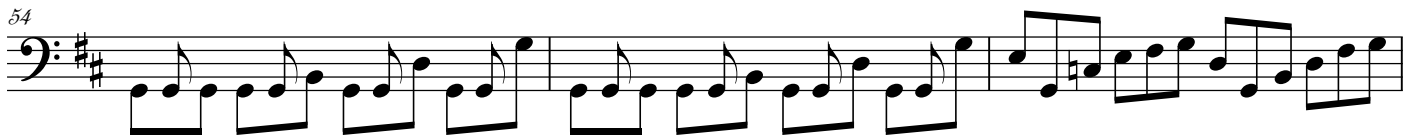
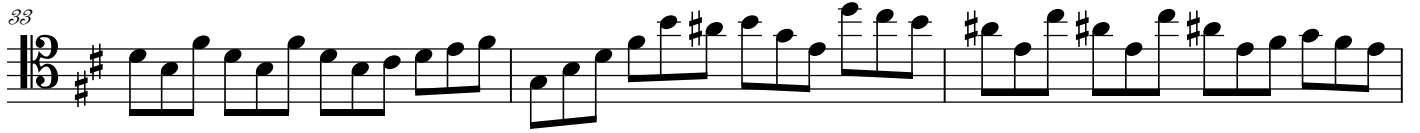
21

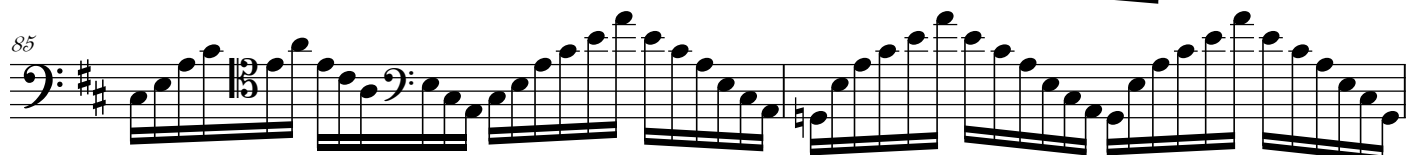
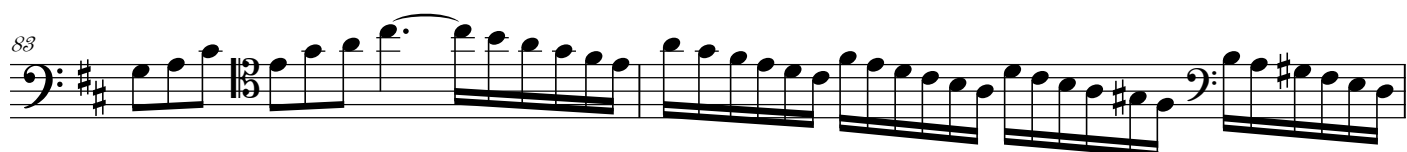
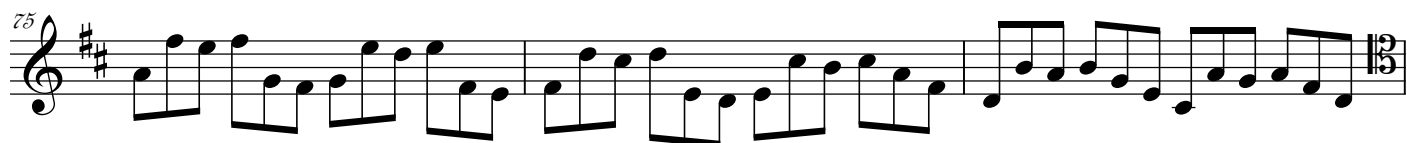
24

27

30

*Volli Subito*





(Adagio)

Allemande  $\frac{3}{8}$   $\sharp$   $\text{C}$

2

3

4

5

6

7

8

/9

10

11 *tr*

12

13 *tr*

14 *tr*

15 *tr* *tr*

16

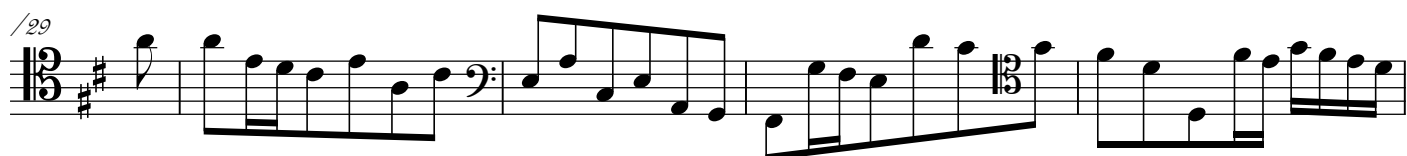
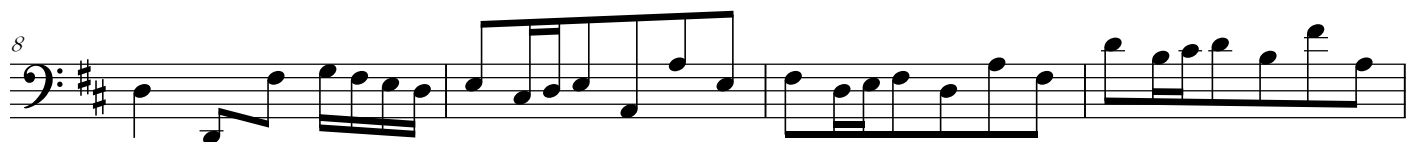
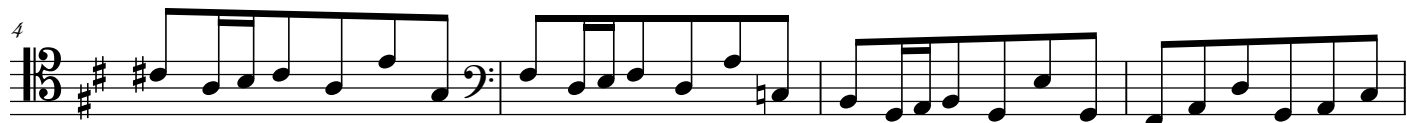
17

18

19

20 *tr*

The image shows a musical score for a bass clef instrument, spanning measures 11 to 20. The key signature is one sharp (F#). The time signature is 3/8. The score consists of ten staves of music. Measure 11 begins with a trill (tr) over a note. Measures 12-14 feature various rhythmic patterns, including eighth and sixteenth notes, and rests. Measure 15 contains two trills (tr) over notes. Measure 16 shows a change in the time signature to 3/4. Measures 17-19 continue with complex rhythmic figures, including sixteenth and thirty-second notes. Measure 20 concludes with a trill (tr) over a note and a double bar line.





*Sarabande*  $\text{3/8}$   $\text{D major}$

Measures 1-4 of the Sarabande piece. The music is in 3/8 time and D major. The first system shows the beginning of the piece with a treble clef and a key signature of two sharps (F# and C#).

5

Measures 5-8 of the Sarabande piece. Measure 5 is marked with a '5' above the staff. The music continues with a treble clef and a key signature of two sharps.

9

Measures 9-12 of the Sarabande piece. Measure 9 is marked with a '9' above the staff. The music continues with a treble clef and a key signature of two sharps.

13

Measures 13-16 of the Sarabande piece. Measure 13 is marked with a '13' above the staff. The music continues with a treble clef and a key signature of two sharps.

17

Measures 17-20 of the Sarabande piece. Measure 17 is marked with a '17' above the staff. The music continues with a treble clef and a key signature of two sharps.

21

Measures 21-24 of the Sarabande piece. Measure 21 is marked with a '21' above the staff. The music continues with a treble clef and a key signature of two sharps.

25

Measures 25-28 of the Sarabande piece. Measure 25 is marked with a '25' above the staff. The music continues with a treble clef and a key signature of two sharps.

29

Measures 29-32 of the Sarabande piece. Measure 29 is marked with a '29' above the staff. The music concludes with a double bar line and repeat dots.

*Gavotte*  $\text{3/8}$   $\text{D major}$

1<sup>re</sup>

Measures 1-4 of the Gavotte piece. The music is in 3/8 time and D major. The first system shows the beginning of the piece with a treble clef and a key signature of two sharps.

4

Measures 5-8 of the Gavotte piece. Measure 5 is marked with a '4' above the staff. The music continues with a treble clef and a key signature of two sharps.



8/

13

17

21

25

*Gavotte* 2de

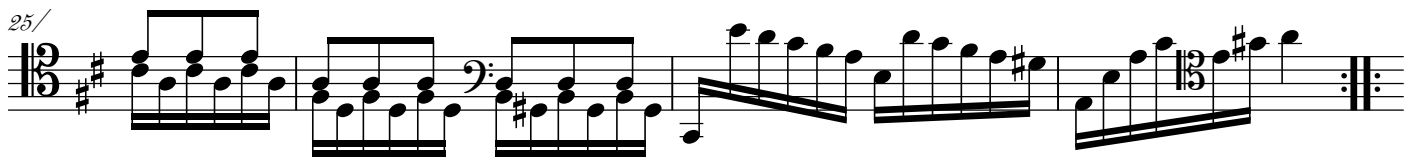
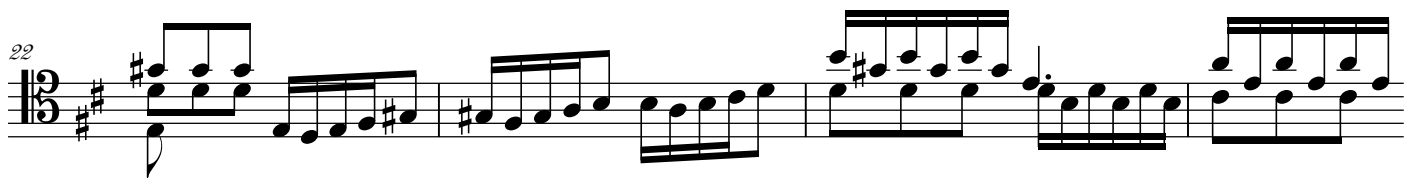
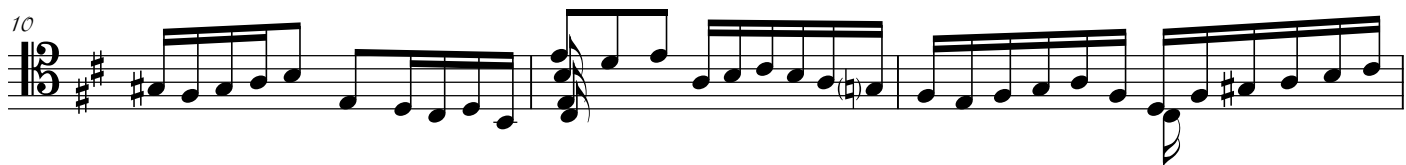
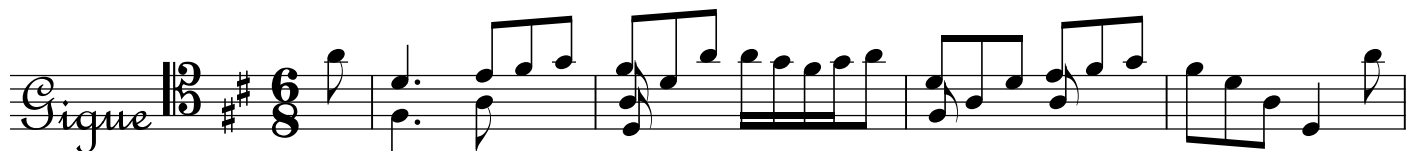
4/

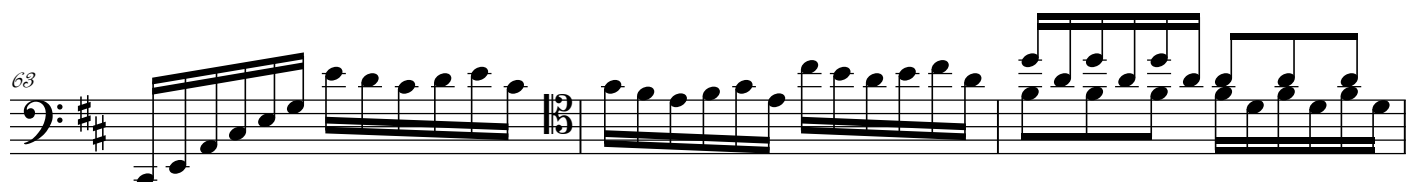
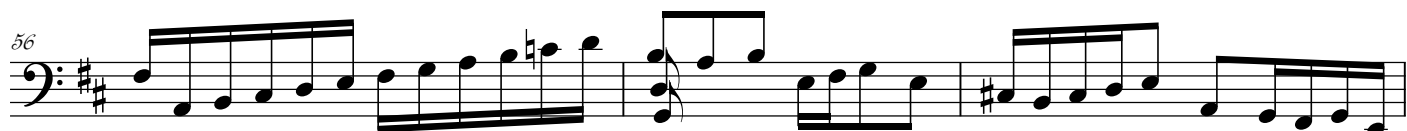
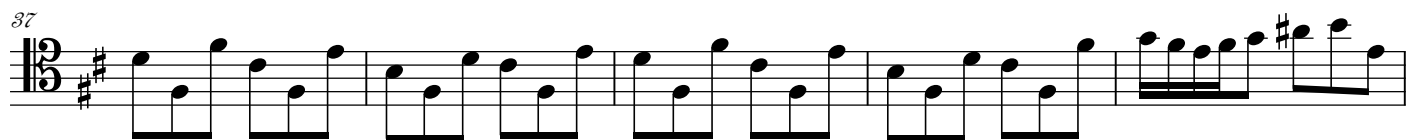
8/

13

17

*Gavotte Da 1re Capo*





La Fin des Suites