

*à L'Harmonie du Personnel de la RATP*

Shin-Itchiro Yokoyama

Ouverture

et

Matsuri

" La Fête "

*pour orchestre d'harmonie*

version 14,09,2011

String bass

# Ouverture et Matsuri

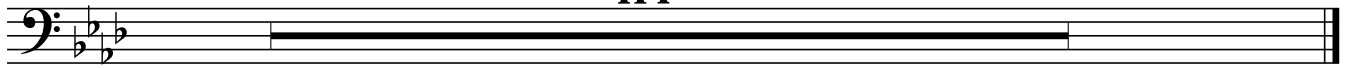
## String bass

### Ouverture

Shin-Itchiro Yokoyama

Allegro ♩ = 138

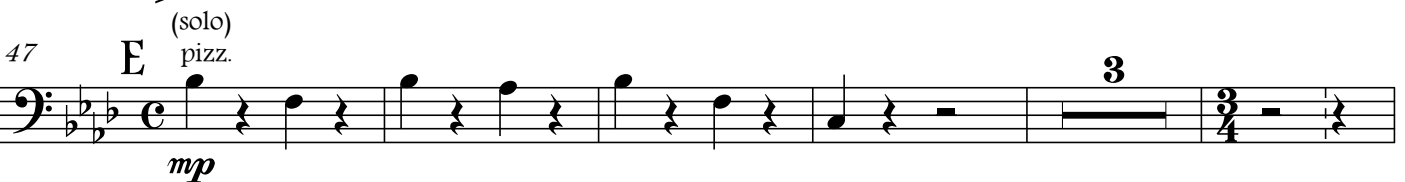
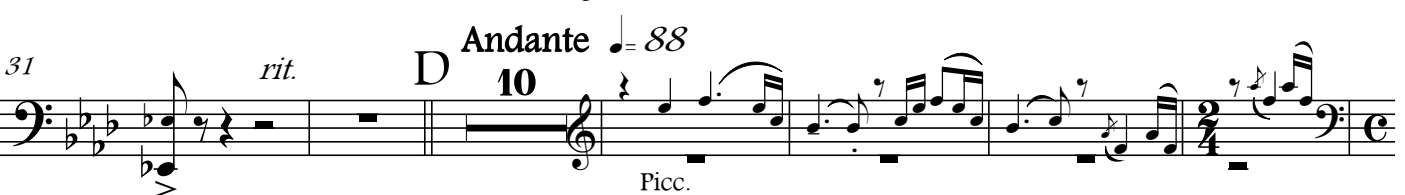
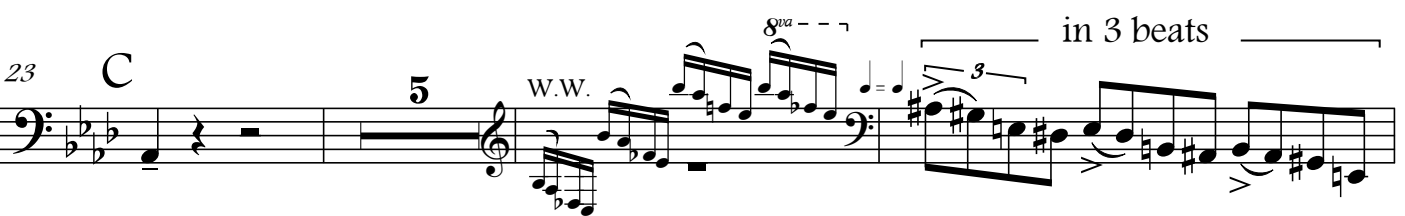
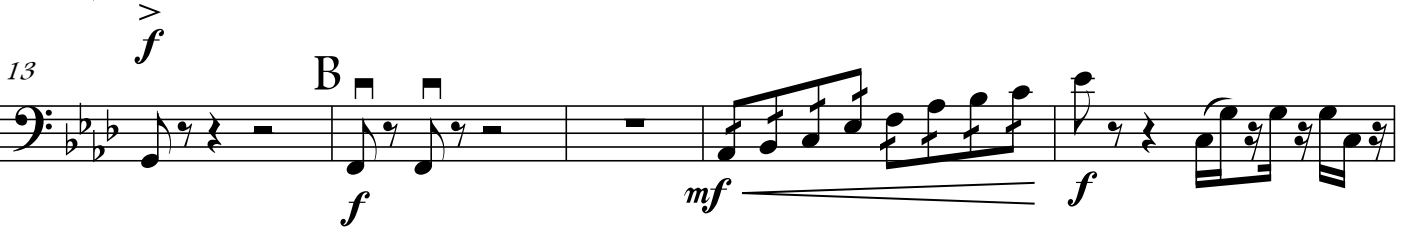
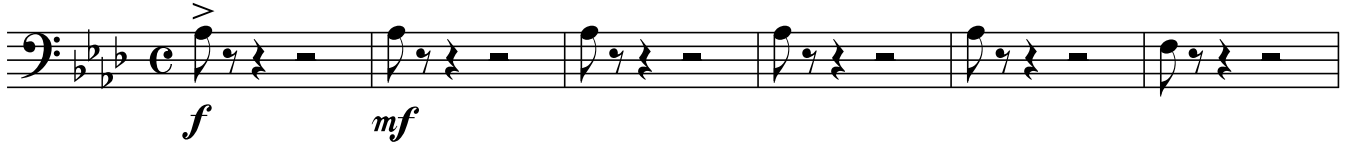
Tacet  
114



Allegro vivace ♩ = 123

### Matsuri

" La Fête "



70 H Hn.1 C.bsn. 3

(solo) *mp* Andante (♩ = 88)

79 I 2 J S.Sax.

87 (tutti) pizz. mp Cl. Eb

*mp* Cl. Eb

95 K Picc.

Picc.

103 arco accel. L Tempo I p pp molto f

arco *p* *pp* *molto* *f* L Tempo I

110 M f mf

*f* *mf*

117 f mf

*f* *mf*

123 f ff N

*f* *ff* N

128 5 W.W. f in 3 beats pesante

5 W.W. *f* in 3 beats *pesante*

136 poco rit. O ff

*poco rit.* O *ff*

142 fff

*fff*

String bass

*à L'Harmonie du Personnel de la RATP*

YOKOYAMA Shin-Itchiro

横山 真一郎

# Ouverture et "Matsuri"

(La Fête)

*pour orchestre d'harmonie*

吹奏楽のための 「序曲 と 祭り」

version 06,03,2015

## Timpani

## Ouverture et "Matsuri"

## Timpani

## Ouverture

YOKOYAMA Shin-Itchiro

Allegro ♩ = 138

Trp.

*f*

6

*p*  $\swarrow$  *f*

11

*mf*

16

*p*  $\swarrow$  *f*

♩ = ♩ (♩ = 92)

23

B 4 Brasses

C

*f*

32

38

D 4 Brasses

E

47

1.

53

2.

F 8 G 8 H 8 I 8

87

J

Hn.

Trp.

Tempo I (♩ = 138)

*f*

Timpani

94

Timpani staff with notes and rests.

99

K *ff*

Timpani staff with notes, rests, and dynamics *p*, *f*, *mf*.

104

L

Timpani staff with notes, rests, and dynamics *p*, *f*.

109

Trb.

Timpani staff with notes, rests, and dynamics *f*, *p*, *ff*.

"Matsuri"

(La Fête)

Allegro vivace ♩ = 123

Timpani staff with notes, rests, and dynamics *f*, *mf*.

6

A

Timpani staff with notes, rests, and dynamic *f*.

11

B

Timpani staff with notes, rests, and dynamic *f*.

21

W.W.

C

6

in 3 beats

Timpani staff with notes, rests, and dynamic *f*.

31

rit.

D

Andante ♩ = 88

13

E

7

Timpani staff with notes, rests, and dynamic *p*.

55

un poco meno mosso (♩ = 84)

F

Cort.1

Timpani staff with notes, rests, and dynamic *p*.

60

G

3

Timpani staff with notes, rests, and dynamic *p*.

Ouverture et Matsuri

Timpani

4

68

2

Hn.1

74

4 I

2 rit.

un poco meno mosso (♩ = 84)

84

J 10 K 4

Picc.

102

Bongo

5 5

5

accel.

pp

molto

107 L Tempo I

f

111

M 4

118

W.W.

f

2

124

N

f

ff

128

6

3

in 3 beats

W.W. poco rit.

138 O a tempo

ff

143

fff

*à L'Harmonie du Personnel de la RATP*

YOKOYAMA Shin-Itchiro

横山 真一郎

# Ouverture et "Matsuri"

(La Fête)

*pour orchestre d'harmonie*

吹奏楽のための 「序曲 と 祭り」

version 06,03,2015

Percussions

(3 players)





# "Matsuri"

(La Fête)

Allegro vivace ♩ = 123

4 A

Xylophone

Wood blocks

Cymbales

Bongo

Bass Drum

Triangle

Ride Cymbale

W.W.

Bongo (low) with thick end of snare drum sticks

1

*f*

8

Xyl.

W. B.

Cym.

Bongo

B. D.

T-gle

Ride

2

3

4

11 B

Xyl.

W. B.

Cym.

Bongo

B. D.

T-gle

Ride

5

6

Bongo (high)

W. B. (high)

*f*

Ride Cym. (bell)

*f*

Ouverture et "Matsuri"

Percussions

4

15

Xyl. W.W. *mf* *f*

W. B. W. B. (high) *f*

Cym.

Bongo Bongo *f*

B. D.

T-gle Ride (bell) *f*

Ride

19

Xyl. W.W. *mf* *f*

W. B.

Cym.

Bongo

B. D.

T-gle Triangle. *f*

Ride

23

C

Xyl.

W. B. 1 2 3

Cym. *f* *mf*

Bongo

B. D.

T-gle

Ride

26

Xyl.

W. B. 4 5 6

Cym.

Bongo

B. D.

T-gle

Ride

Percussions

29 W.W. *8va* *f* *3* in 3 beats *rit.*

Xyl.  
W. B.  
Cym.  
Bongo  
B. D.  
T-gle  
Ride

33 **D** *Andante* ♩ = 88 **E** **F** *un poco meno mosso* (♩ = 84)

Xyl.  
W. B.  
Cym.  
Bongo  
B. D.  
T-gle  
Ride

57 **G**

Xyl.  
W. B.  
Cym.  
Bongo  
B. D.  
T-gle  
Ride

64

Xyl.  
W. B.  
Cym.  
Bongo  
B. D.  
T-gle  
Ride

Ouverture et "Matsuri"

Percussions

6

70 Tuba H Hn. 1

Xyl.

W. B.

Cym.

Bongo

B. D.

T-gle

Ride

B. D.

T-gle.

*p*

75 Tromb. 1 Cort. I

Xyl.

W. B.

Cym.

Bongo

B. D.

T-gle

Ride

Ride Cym. with snare drum sticks

*pp* *f*

80 Andante (♩ = 88) 2<sup>rit.</sup> I 7

Xyl.

W. B.

Cym.

Bongo

B. D.

T-gle

Ride

Cl. E<sub>b</sub>

94 K

Xyl.

W. B.

Cym.

Bongo

B. D.

T-gle

Ride

T-gle.

*p*

102 Picc.

Xyl.

W. B.

Cym.

Bongo (high)

B. D.

T-gle

Ride

*p*

*accel.*

106 L Tempo I (♩ = 138)

Xyl.

W. B.

Cym.

Bongo

B. D.

T-gle

Ride

*f*

1

2

109

Xyl.

W. B.

Cym.

Bongo

B. D.

T-gle

Ride

3

4

5

112 M

Xyl.

W. B.

Cym.

Bongo

B. D.

T-gle

Ride

W. B. (low)

*f*

Ride (bell)

*f*

6

Ouverture et "Matsuri"

8

Percussions

115

Xyl.

W. B. (low)

Cym.

Bongo

B. D.

T-gle

Ride

*mf* *f* *f* *f*

121

Xyl.

W. B.

Cym.

Bongo

B. D.

T-gle

Ride

*mf* *f* *f*

T-gle. *tr*

125

N

Xyl.

W. B.

Cym.

Bongo

B. D.

T-gle

Ride

1 2

Bongo (high) *tr* *f* *mf*

*ff* *tr*

129

Xyl.

W. B.

Cym.

Bongo

B. D.

T-gle

Ride

3 4 5 6

*f* *mf*

Percussions

133 W.W. *8va-* *f* *in 3 beats* *pesante* *poco rit.*

Xyl.

W. B.

Cym.

Bongo

B. D.

T-gle

Ride

138 *a tempo*

Xyl.

W. B. 1 2 3

Cym.

Bongo *ff*

B. D.

T-gle *ff*

Ride

*ff*

141

Xyl.

W. B. 4 5 6

Cym.

Bongo

B. D.

T-gle

Ride

144

Xyl.

W. B. 7

Cym.

Bongo *fff*

B. D.

T-gle *fff*

Ride

*fff*