

Suite 6me

Transcription pour Violon à 4 cordes
par Yokoyama Shin-Itchiro

a Violoncello Solo senza Basso.

J.S. Bach

Prélude G major $\frac{12}{8}$

3 *f* *p*

6 *f* *p* *f*

9

12 *p* *f*

15 *p* *f*

18

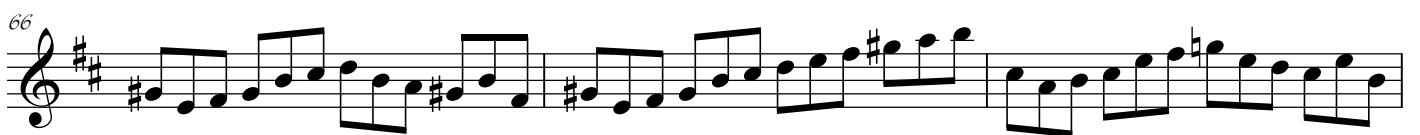
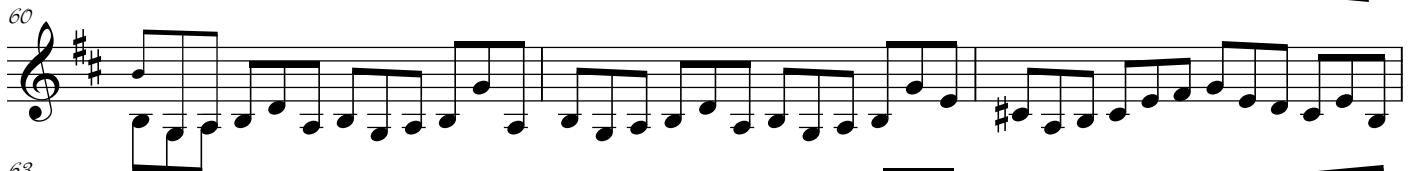
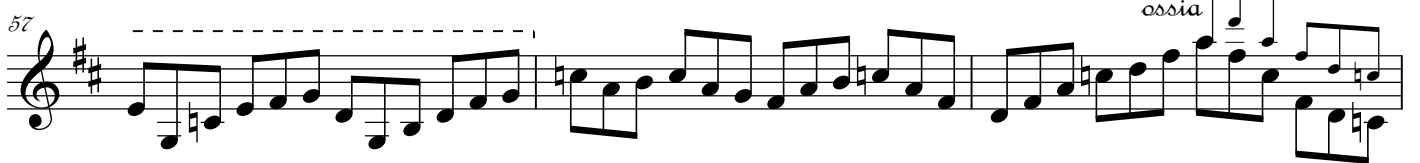
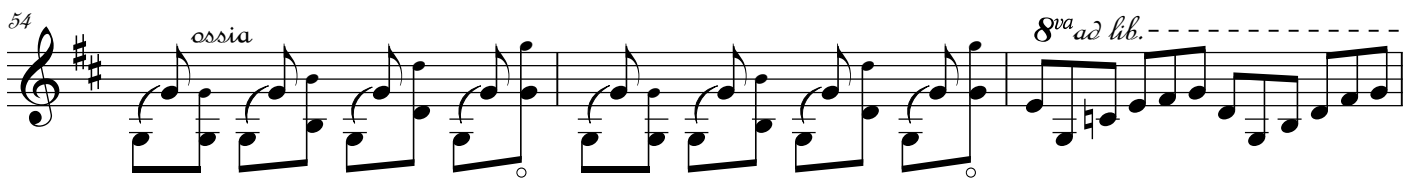
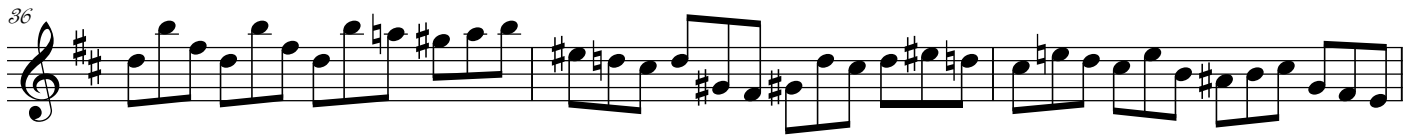
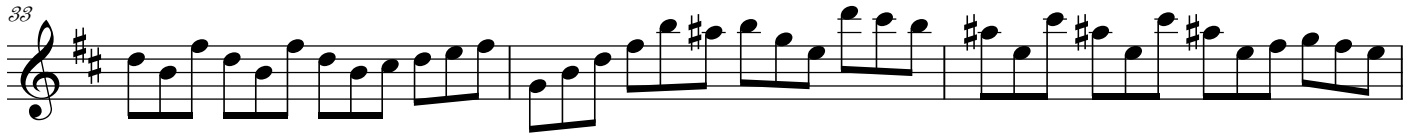
21

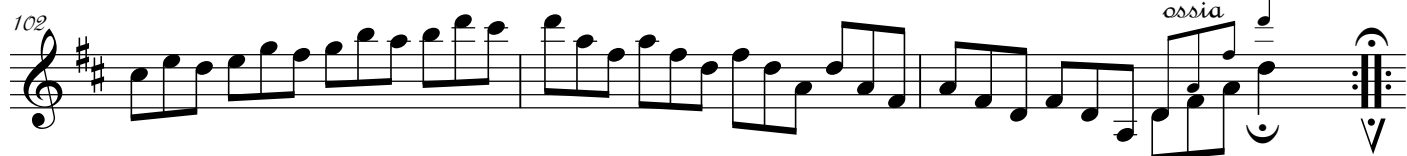
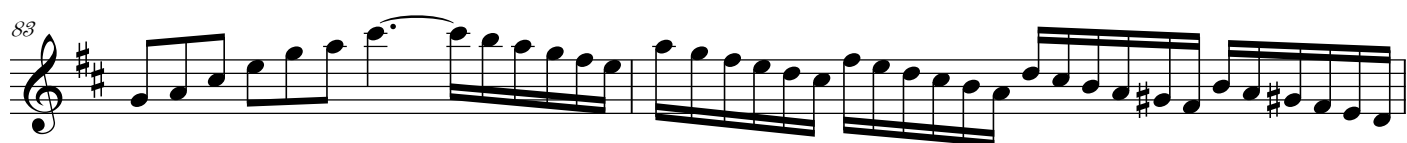
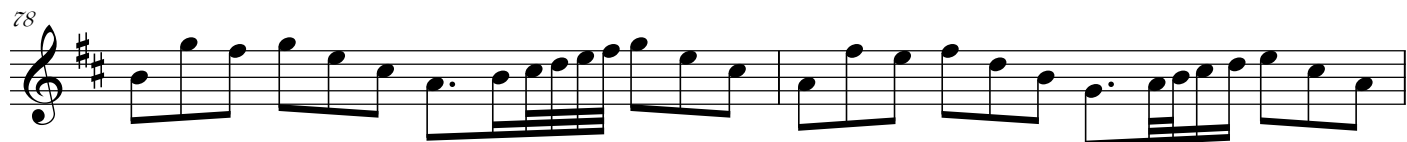
24

27

30

Volli Subito



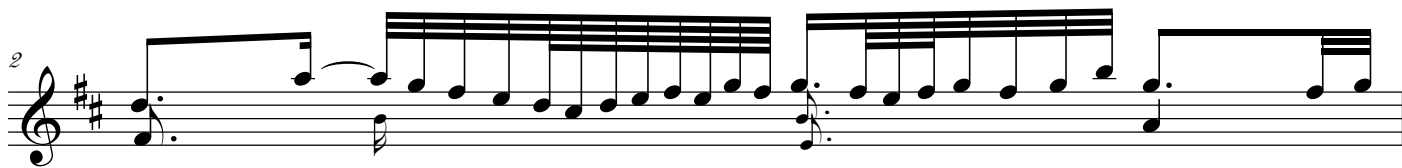


(Adagio)

Allemande



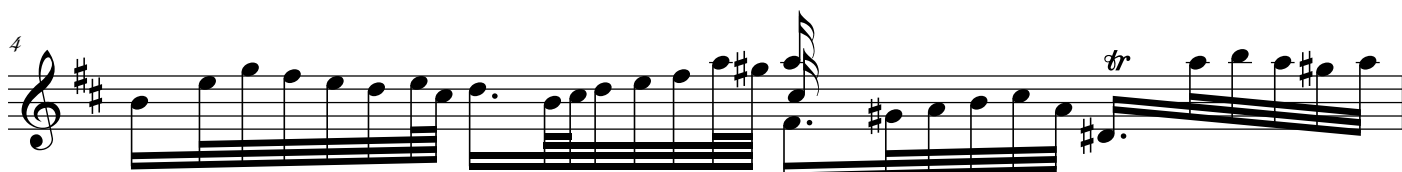
2



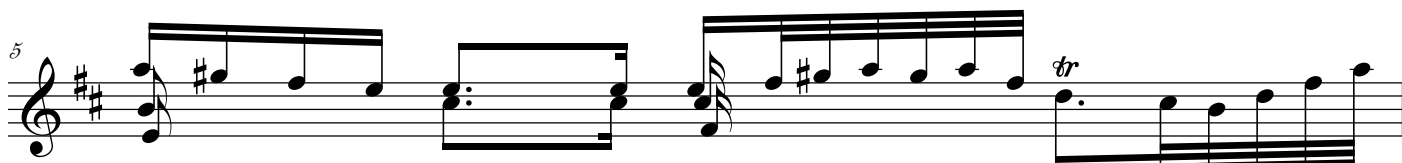
3



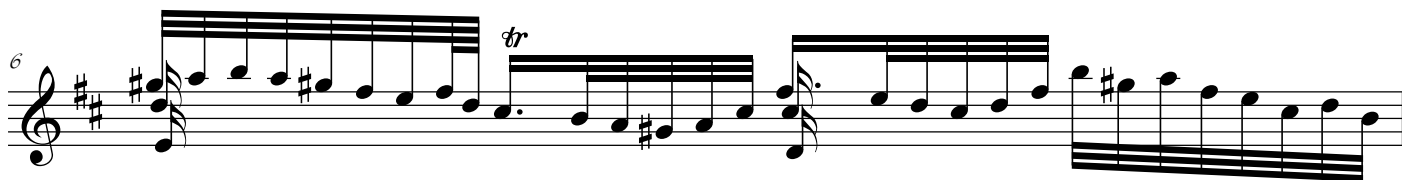
4



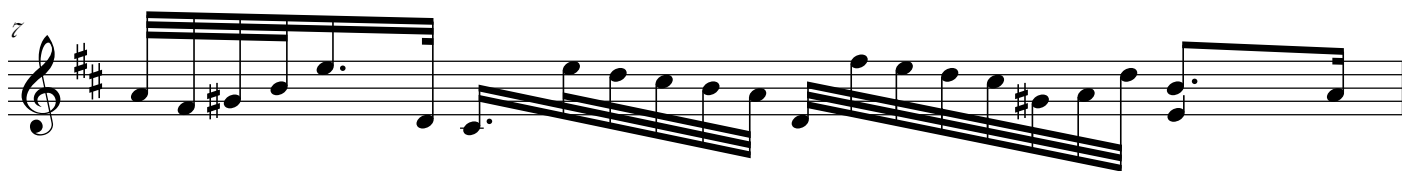
5



6



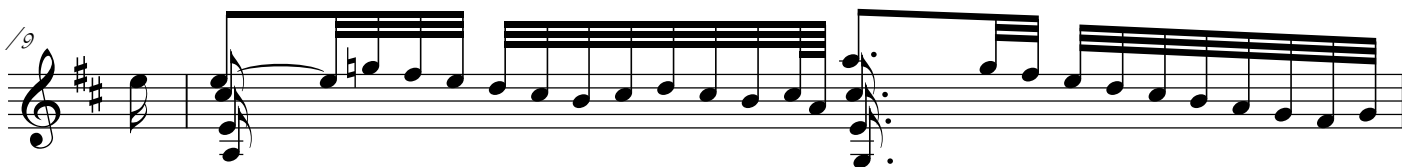
7



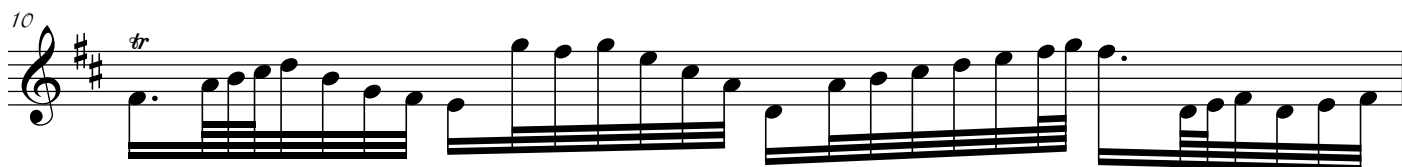
8



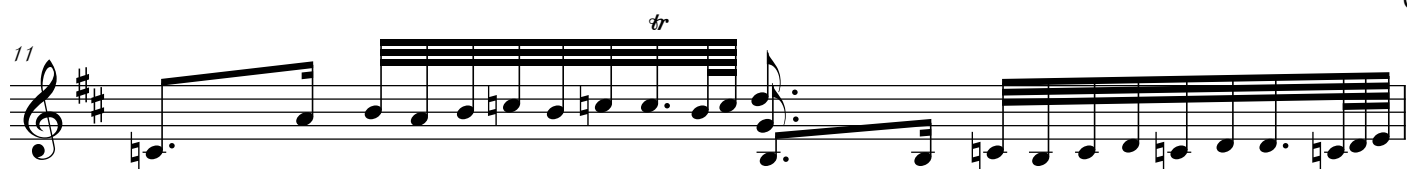
9



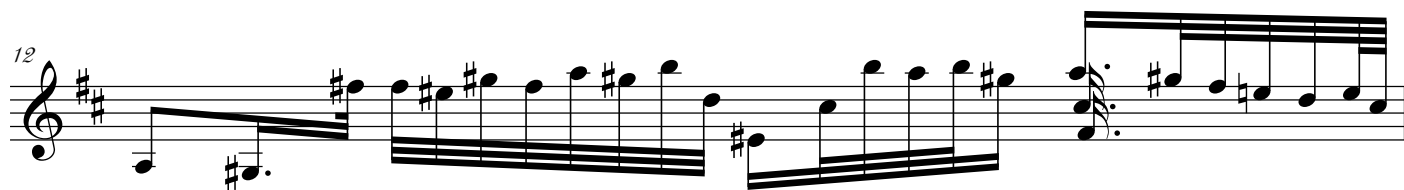
10



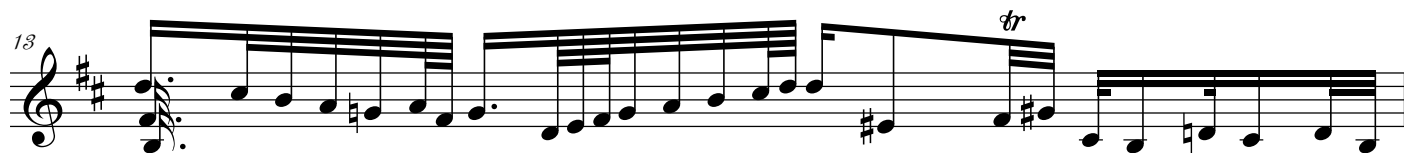
11 *tr*



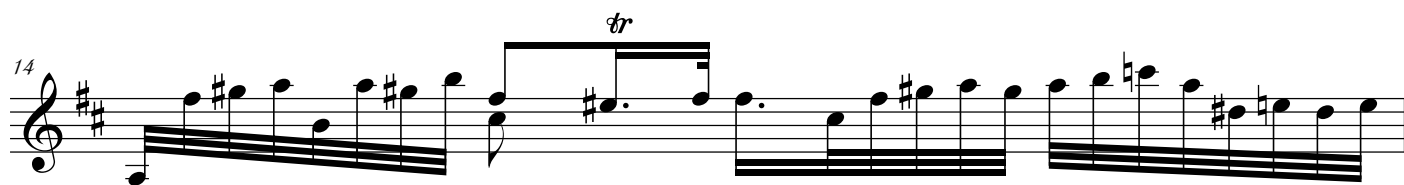
12



13 *tr*



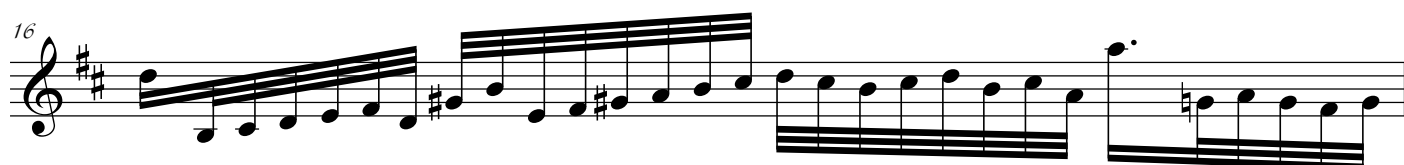
14 *tr*



15 *tr* *tr*



16



17



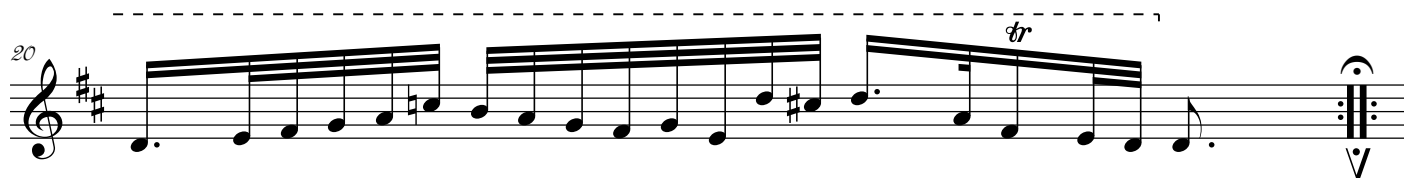
18

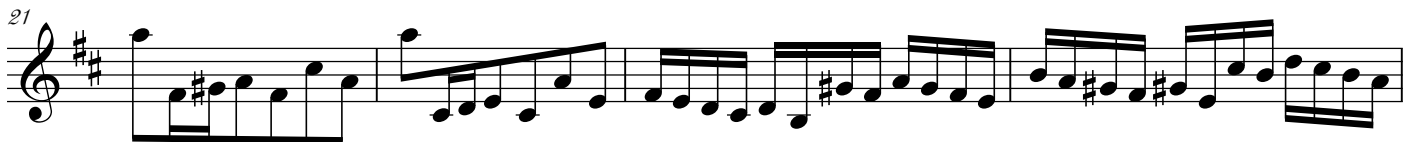
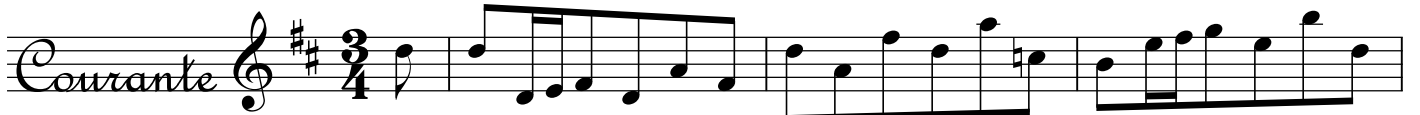


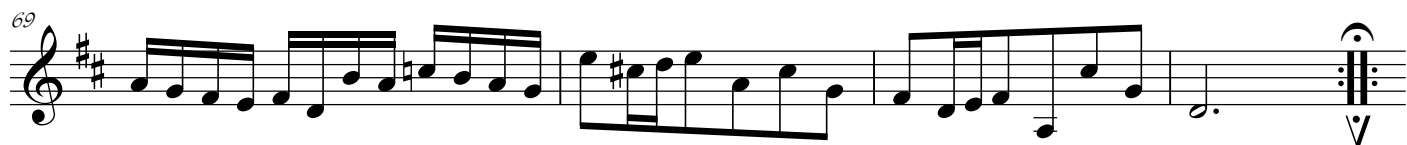
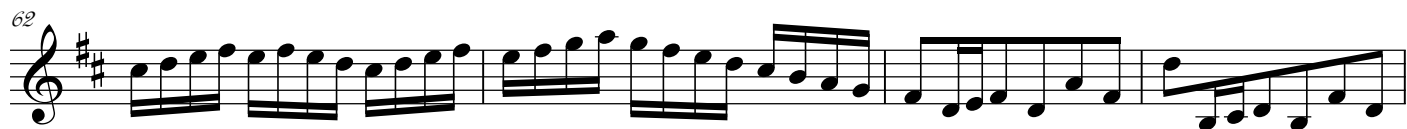
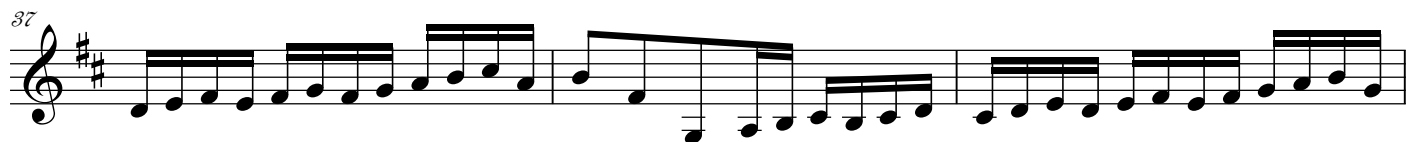
19 *8va ad lib.*

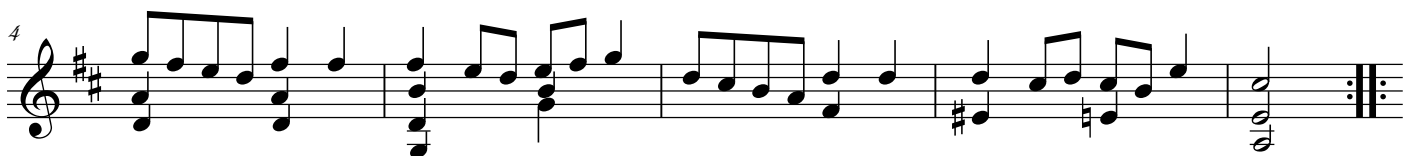
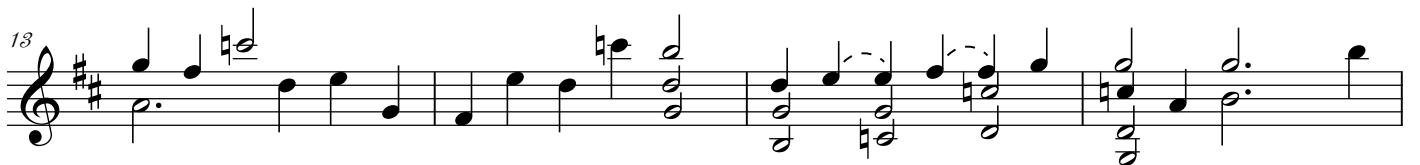


20 *tr*









8/

13

17

21

25

Gavotte
2de

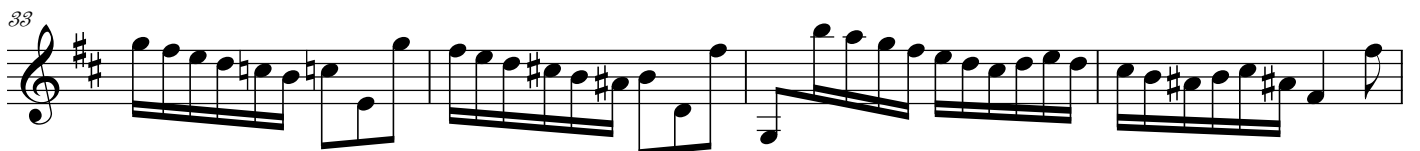
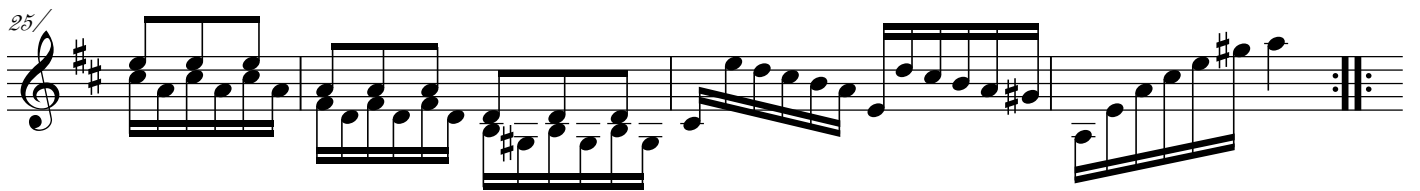
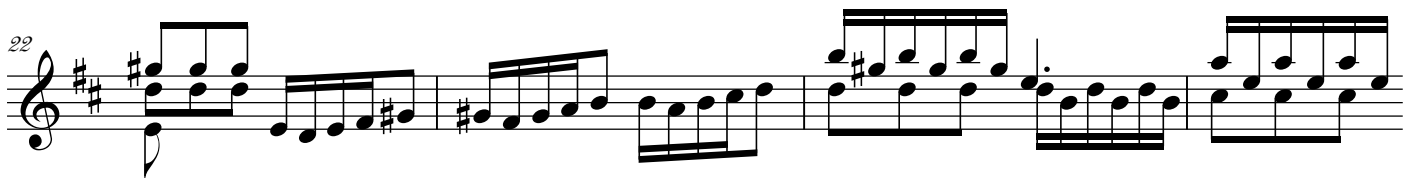
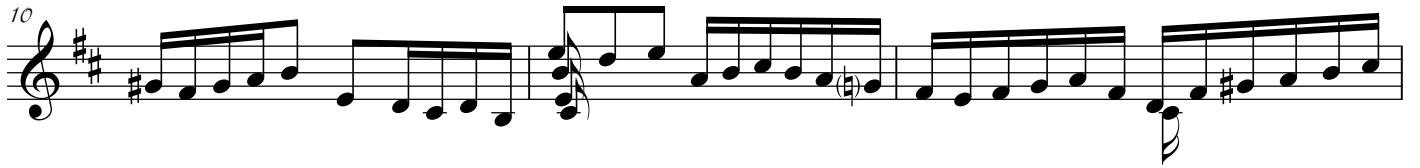
4/

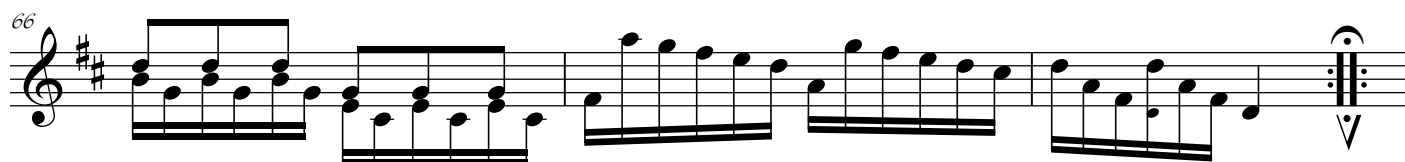
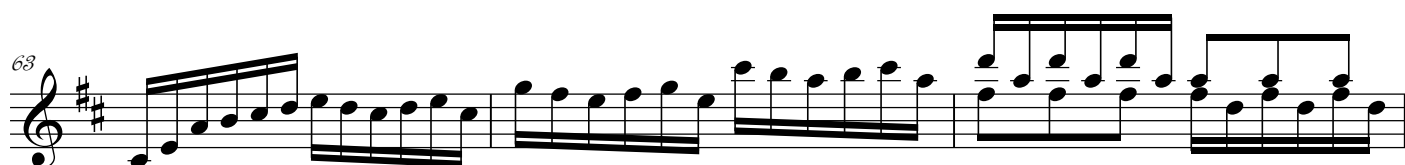
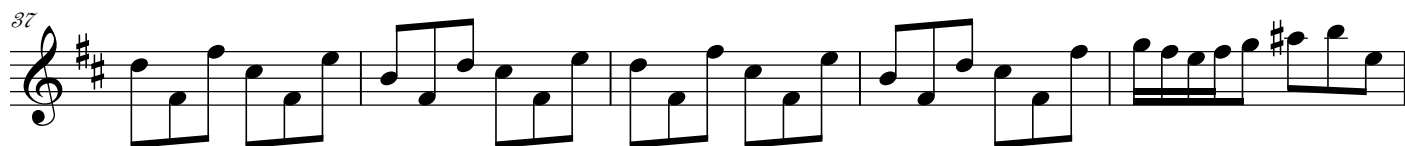
8/

13

17

Gavotte Da
1re Capo





La Fin des Suites