

6

*Suites a
Violoncello Solo*

senza

Basso.

transposées pour

Violino Solo

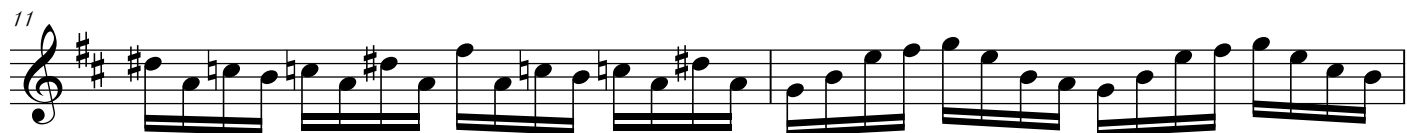
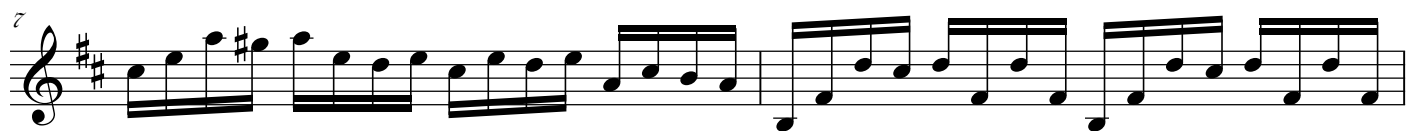
composées

par

Sr. J. S. Bach.

Maitre de Chapelle.

Suïtte 1^{re}



21

23

25

27

29

31

33

I

II

(corde doppia)

35

37

39

41



Courante 

4

8

12

15

/19

23

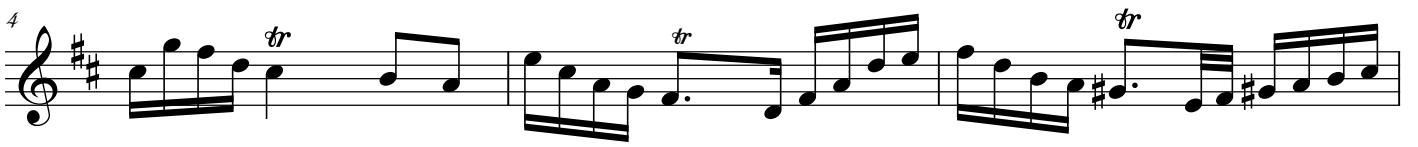
27

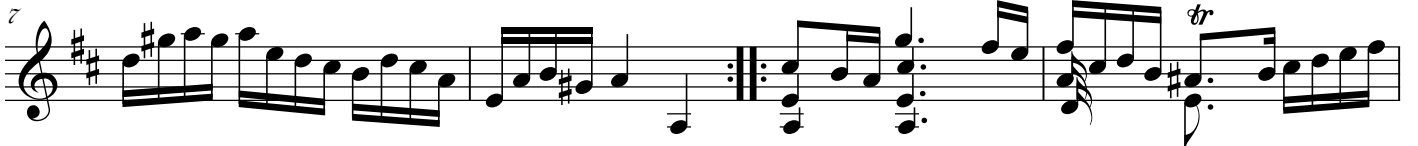
31

35

39

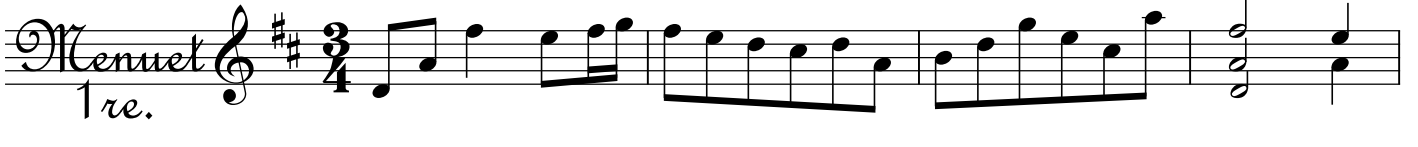
Sarabande 

4 

7 

11 

14 

Menuet 1^{re}. 

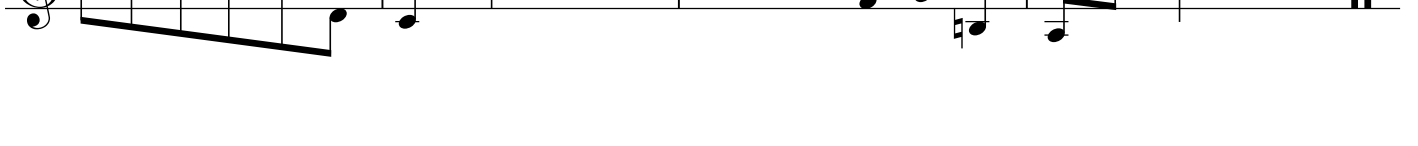
5 

10 

15 

20 

Menuet 2^{de}. 

5 

9

13

17

21

Gigue

5

9

/13

17

22

27

31/