

Suïtte 6me

Transcription en Sol majeur

a Violoncello Solo senza Basso.

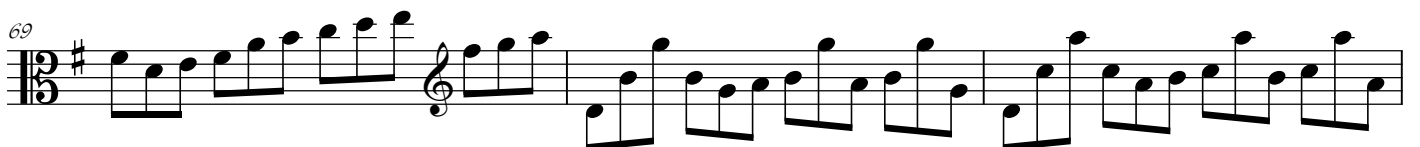
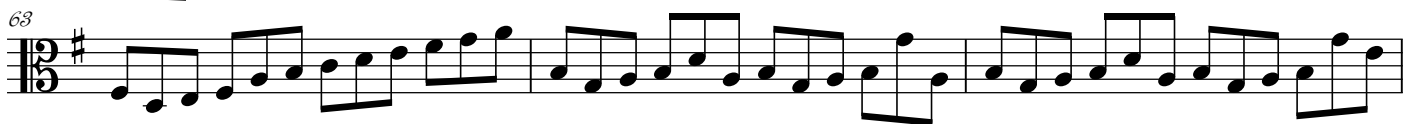
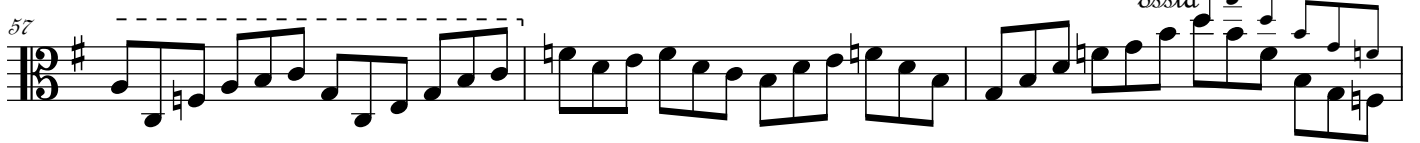
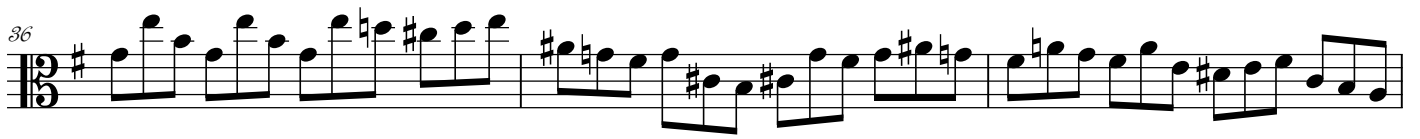
pour Alto par Yokoyama Shin-Itchiro

J.S. Bach

Prélude $\frac{3}{8}$ # 12

Musical score for the Prelude of Suite No. 6 by J.S. Bach, arranged for Cello solo. The score consists of 10 staves of music in G major, 3/8 time. It features a repeating eighth-note pattern in the right hand and a more complex bass line in the left hand. Dynamics range from piano (*p*) to forte (*f*). The piece ends with a *Tutti Subito* instruction.

Tutti Subito



72

75

78

80

83

85

87

89

91

94

96

99

102

ossia

(Adagio)

Allemande

2

3

4

5

6

7

8

/9

10

11 *tr*

12

13 *tr*

14 *tr*

15 *tr* *tr*

16

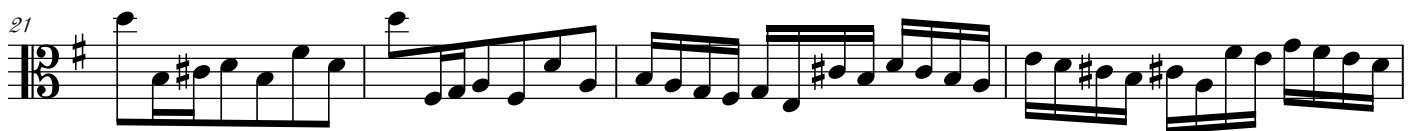
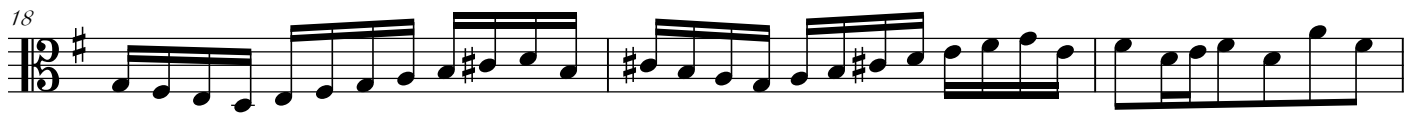
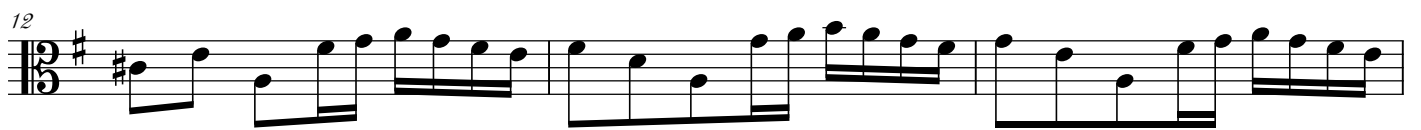
17

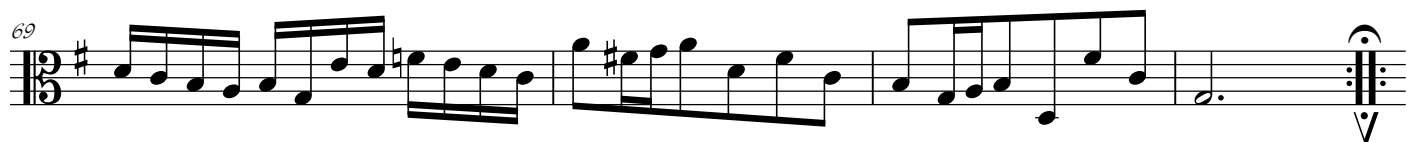
18

19 *8va ad lib.*

20 *tr*

Detailed description: This page contains ten staves of musical notation for a bass clef instrument. The key signature has one sharp (F#). The time signature is 3/8. The notation includes various rhythmic values such as eighth and sixteenth notes, and rests. Trills are indicated by the 'tr' symbol above notes in measures 11, 13, 14, 15, and 20. A dynamic marking '8va ad lib.' is present in measure 19, with a dashed line extending across the staff. The piece concludes with a double bar line and repeat dots in measure 20.





Sarabande 3/8 F\#

5

9

13

17

21

25

29

Gavotte 3/8 F\# C

1^{re}

4

8/

13

17

21

25

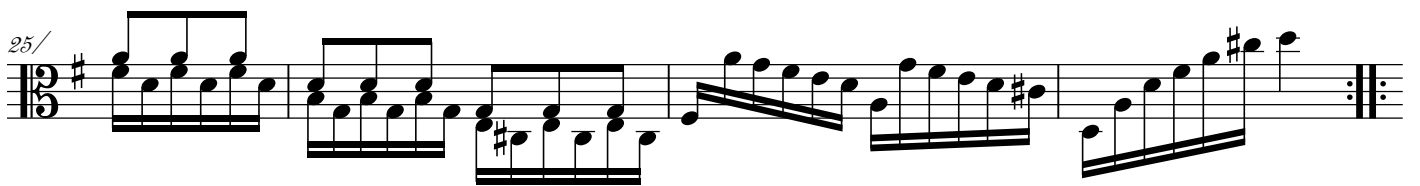
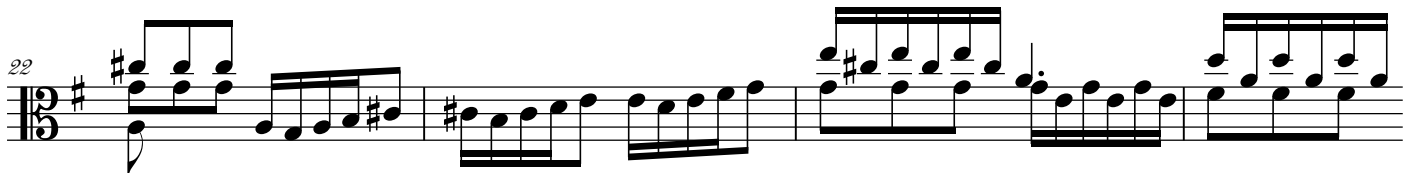
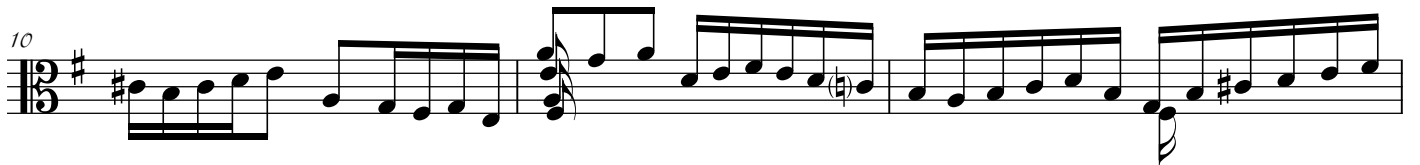
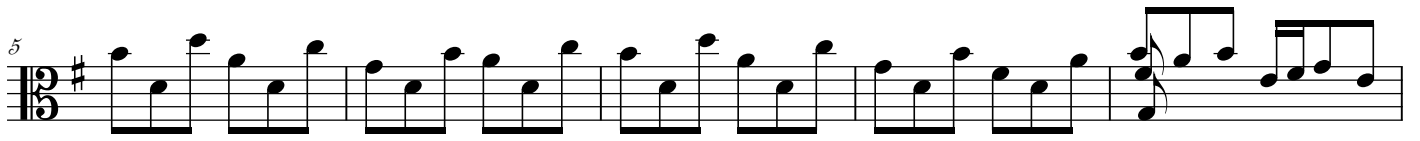
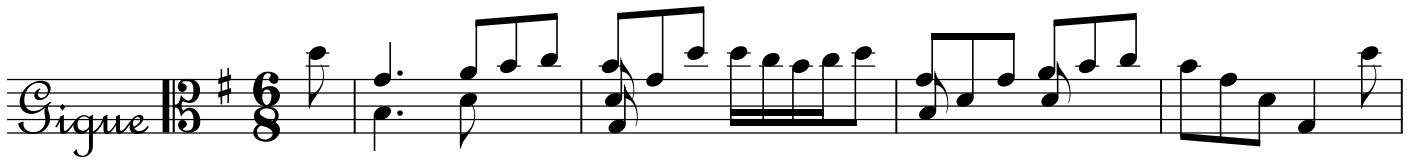
Gavotte 2e

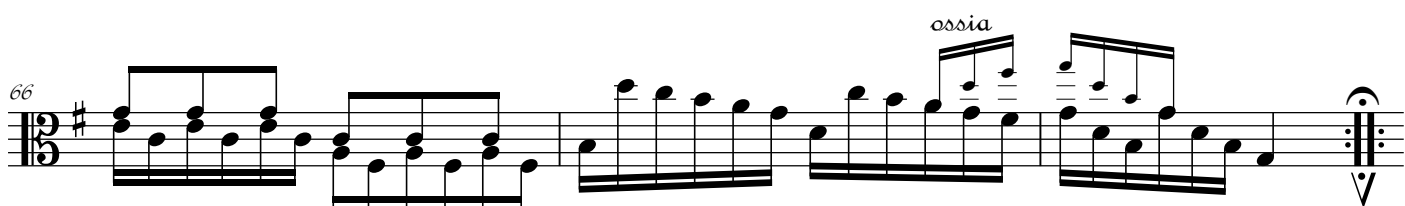
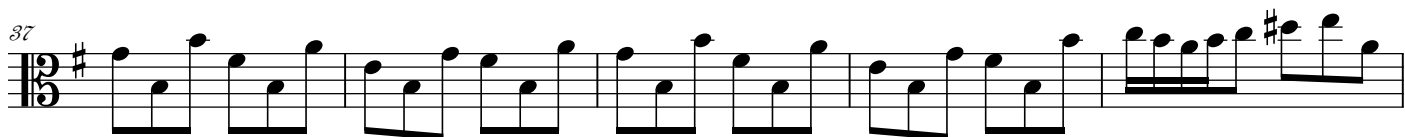
4/

8/

13

17





La Fin des Suites