

Suite 3 (Presto)

Prélude

4

7

10

13

17

21

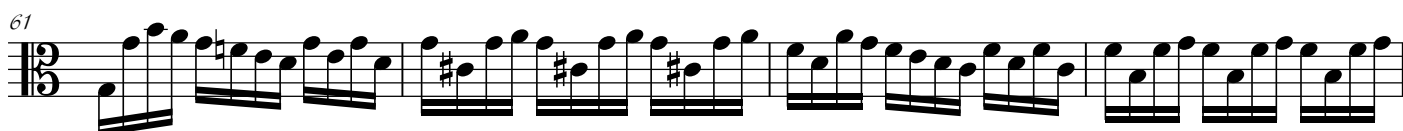
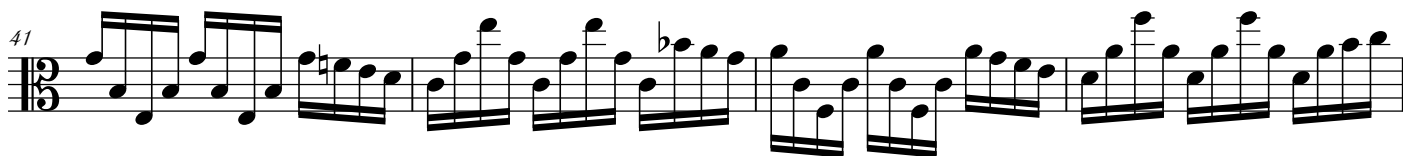
24

27

30

33

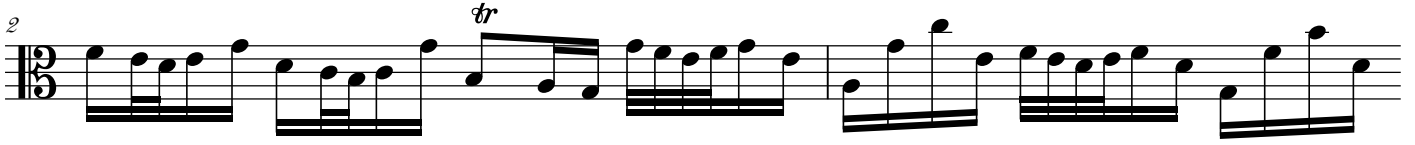
37



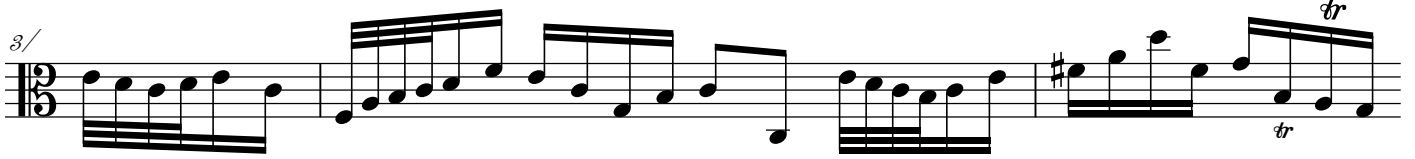
Allemande



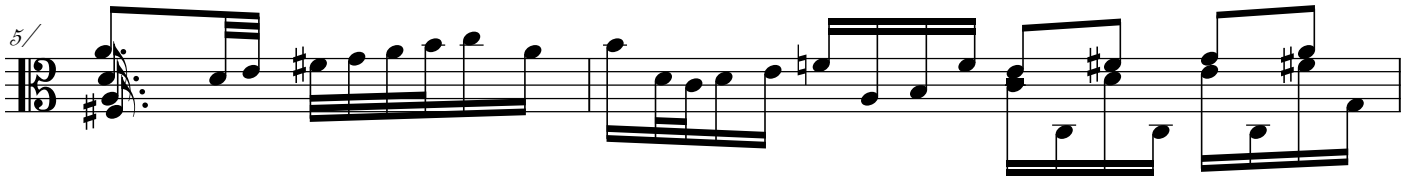
2



3/



5/



7



8/

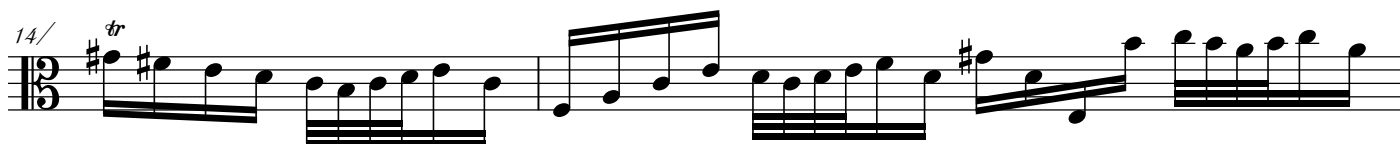
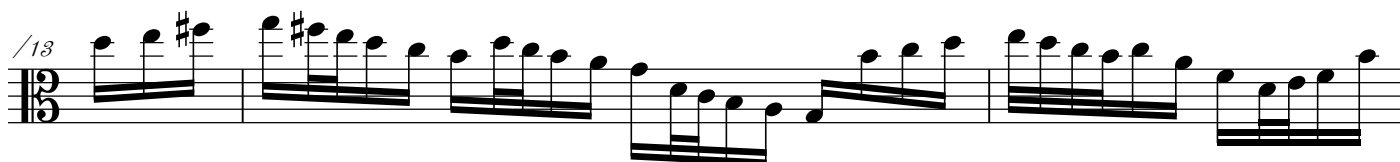


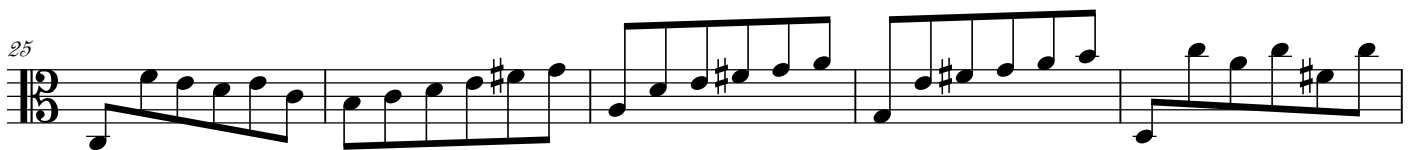
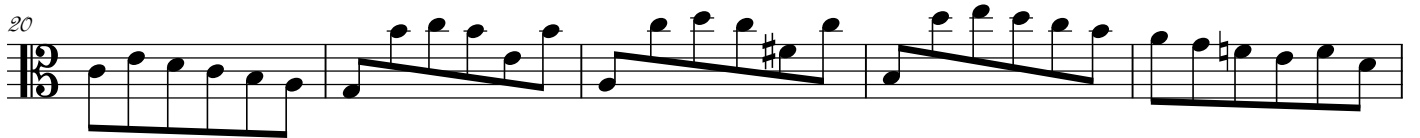
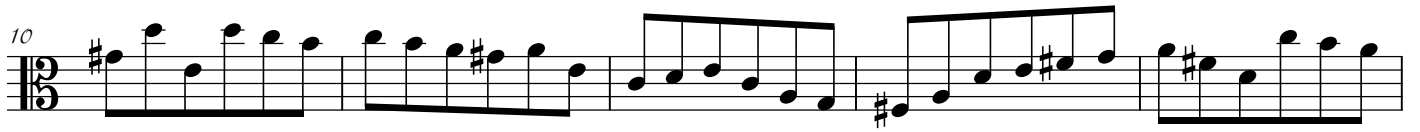
10

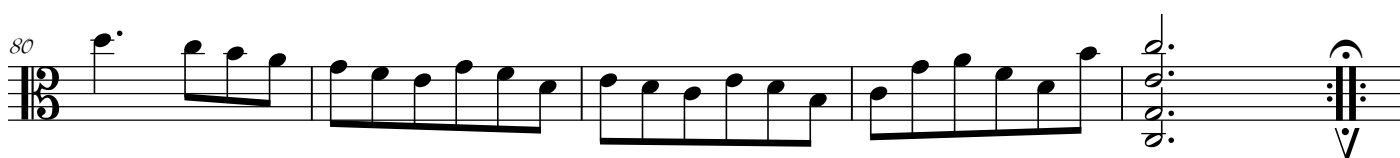
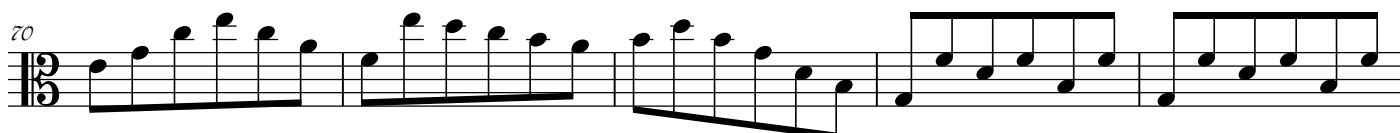
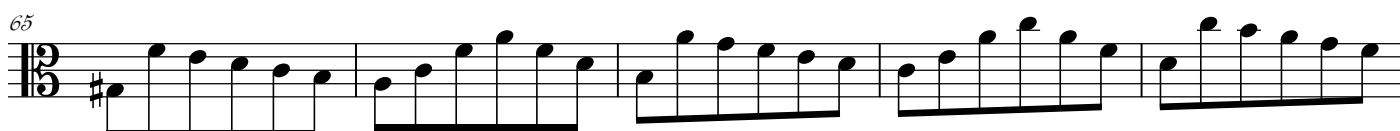
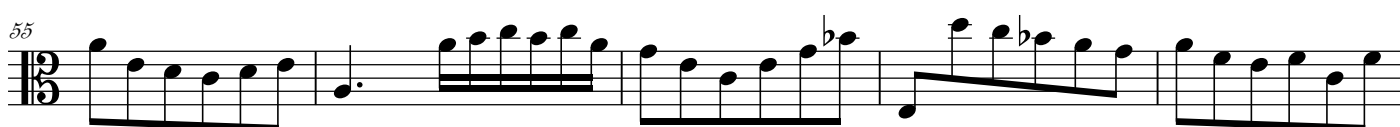


11/









Sarabande $\text{B} \frac{3}{4}$

The first system of the Sarabande consists of three measures. It begins with a treble clef, a key signature of one flat (B-flat), and a 3/4 time signature. The melody starts on a half note G4, followed by quarter notes A4 and Bb4. The bass line provides a steady accompaniment with a half note G3 and a quarter note Bb3.

4

The second system contains measures 4, 5, and 6. Measure 4 features a quarter rest followed by quarter notes C5, Bb4, and A4. Measure 5 has quarter notes G4, F4, and E4. Measure 6 begins with a quarter rest, followed by quarter notes D4, C4, and Bb3. The bass line continues with a half note G3 and a quarter note Bb3.

7

The third system contains measures 7, 8, and 9. Measure 7 has quarter notes A4, G4, and F4. Measure 8 has quarter notes E4, D4, and C4. Measure 9 has quarter notes Bb3, A3, and G3. The bass line continues with a half note G3 and a quarter note Bb3.

10

The fourth system contains measures 10, 11, and 12. Measure 10 has quarter notes F4, E4, and D4. Measure 11 has quarter notes C4, Bb3, and A3. Measure 12 has quarter notes G3, F3, and E3. The bass line continues with a half note G3 and a quarter note Bb3.

13

The fifth system contains measures 13, 14, 15, and 16. Measure 13 has quarter notes D4, C4, and Bb3. Measure 14 has quarter notes A3, G3, and F3. Measure 15 has quarter notes E3, D3, and C3. Measure 16 has quarter notes Bb2, A2, and G2. The bass line continues with a half note G3 and a quarter note Bb3.

17

The sixth system contains measures 17, 18, 19, and 20. Measure 17 has quarter notes F3, E3, and D3. Measure 18 has quarter notes C3, Bb2, and A2. Measure 19 has quarter notes G2, F2, and E2. Measure 20 has quarter notes D2, C2, and Bb1. The bass line continues with a half note G3 and a quarter note Bb3.

21

The seventh system contains measures 21, 22, 23, and 24. Measure 21 has quarter notes A2, G2, and F2. Measure 22 has quarter notes E2, D2, and C2. Measure 23 has quarter notes Bb1, A1, and G1. Measure 24 has quarter notes F1, E1, and D1. The bass line continues with a half note G3 and a quarter note Bb3.

Bourrée $\text{B} \text{C}$
1^{re}

The first system of the Bourrée consists of four measures. It begins with a treble clef, a key signature of one flat (B-flat), and a common time signature (C). The melody starts on a half note G4, followed by quarter notes A4 and Bb4. The bass line provides a steady accompaniment with a half note G3 and a quarter note Bb3.

5

The second system contains measures 5, 6, 7, and 8. Measure 5 has quarter notes C5, Bb4, and A4. Measure 6 has quarter notes G4, F4, and E4. Measure 7 has quarter notes D4, C4, and Bb3. Measure 8 has quarter notes A3, G3, and F3. The bass line continues with a half note G3 and a quarter note Bb3.

19

The third system contains measures 19, 20, 21, and 22. Measure 19 has quarter notes E3, D3, and C3. Measure 20 has quarter notes Bb2, A2, and G2. Measure 21 has quarter notes F2, E2, and D2. Measure 22 has quarter notes C2, Bb1, and A1. The bass line continues with a half note G3 and a quarter note Bb3.

