

6

*Suites a
Violoncello Solo*

senza

Basso.

transposées pour

Viola Solo

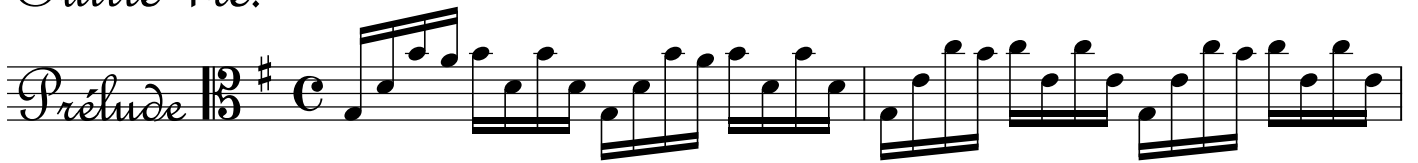
composées

par

Sr. J. S. Bach.

Maitre de Chapelle.

Suïtte 1^{re}.



21

23

25

27

29

31

33

I

II
(corde doppia)

35

37

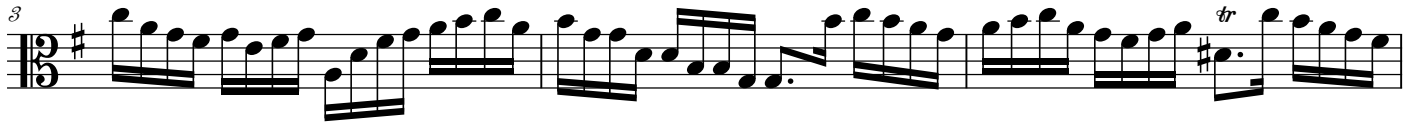
39

41

Allemande




3



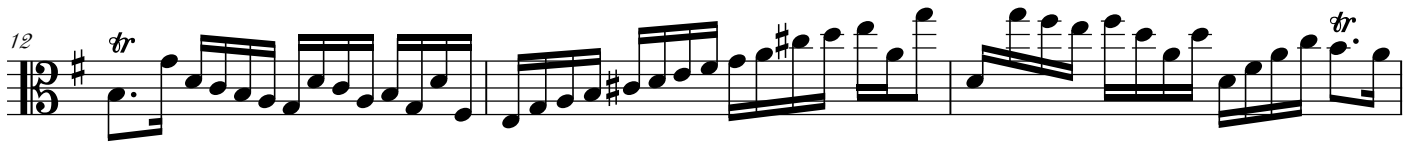
6



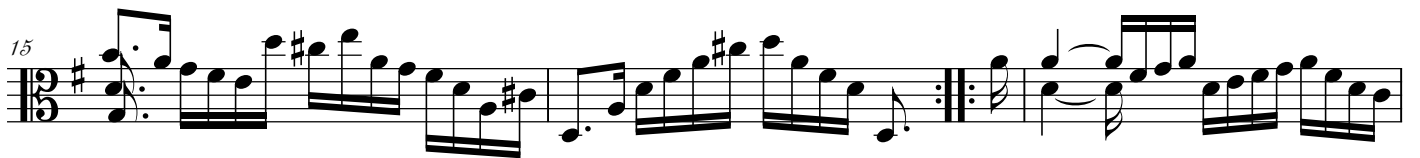
9



12



15



18



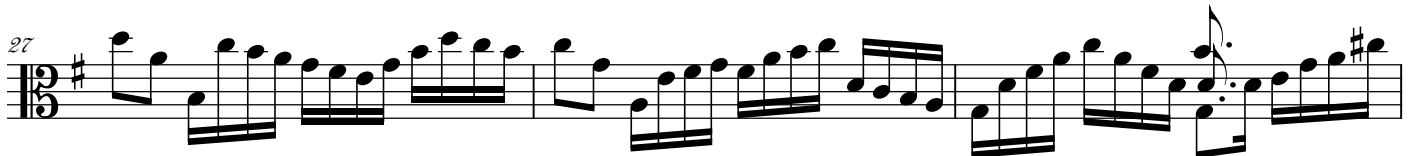
21



24



27



30



Courante $\frac{3}{4}$ \sharp

4

8 *tr* *tr*

12 *tr*

15 *tr*

/19

23 *tr*

27

31

35 *tr*

39

Sarabande 3/4 F\#

4 tr

7 tr

11 tr

14

Menuet 1er 3/4 F\#

5

10

15

20

Menuet 2nd 3/4 F

5

9

13

17

21

Menuet
1re. Da Capo

Gigue

5

9

/13

17

22

27

31/

Fine